

| | |
|------------|-----------------------------|
| 05/05/2008 | PERMIT |
| 08/13/2008 | PERMIT COMMENT REVISION SET |
| 10/14/2008 | PERMIT RESPONSE BOOK |
| 10/14/2008 | BD SET |
| 02/26/2009 | BD SET |
| 02/26/2009 | 100% CONSTRUCTION SET |

DRAWING TITLE
**PARKING LEVEL -1/RES LEVEL +1
STRIPING PLAN**

PROJECT NO.
05092.00
DRAWN BY:
SCALE:
1/16"=1'-0"
DATE:
OCTOBER 15, 2008
DWG. NO.

AG1.11

BULL_135

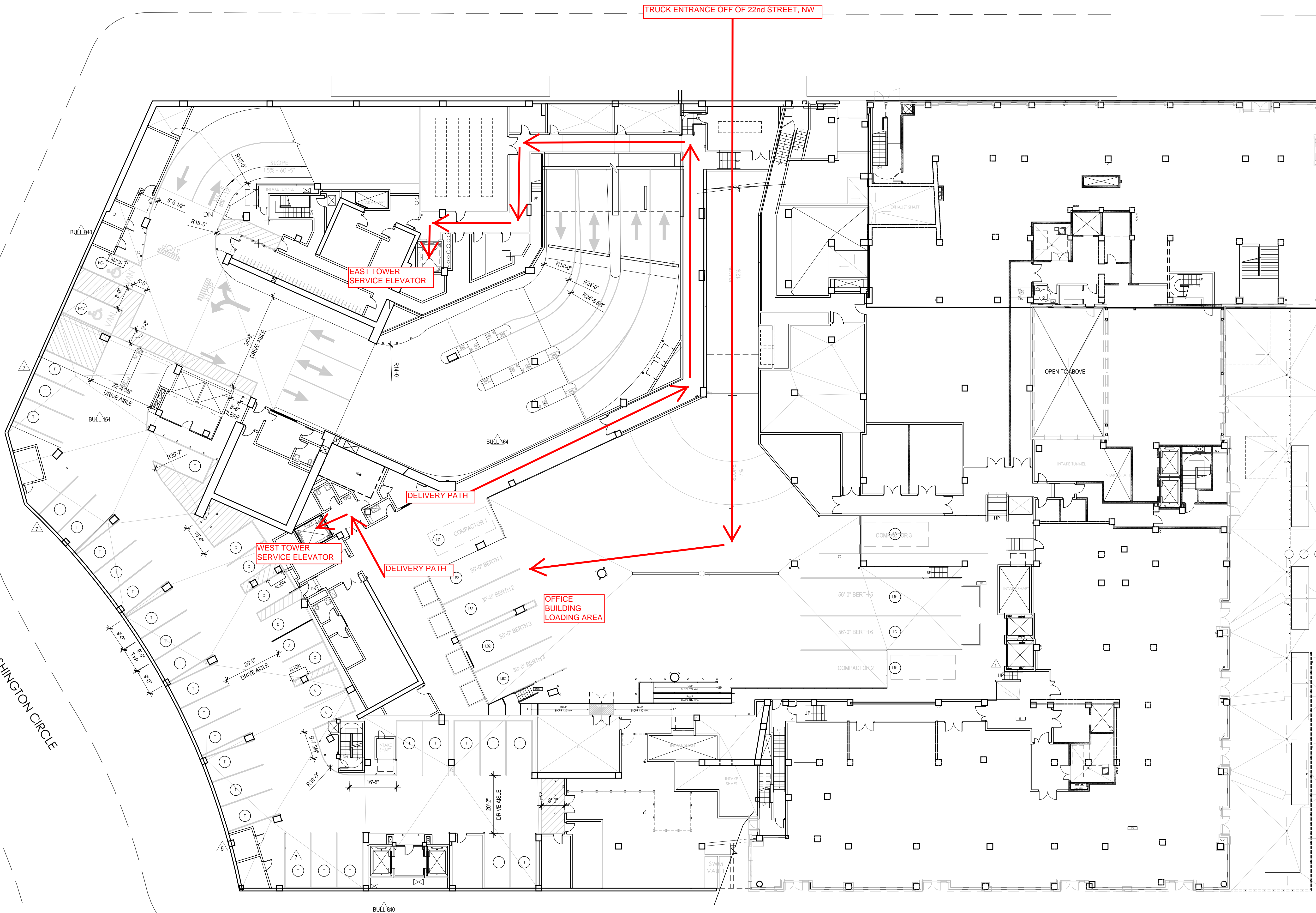
22ND STREET

TRUCK ENTRANCE OFF OF 22nd STREET, NW

PENNSYLVANIA AVENUE

I STREET

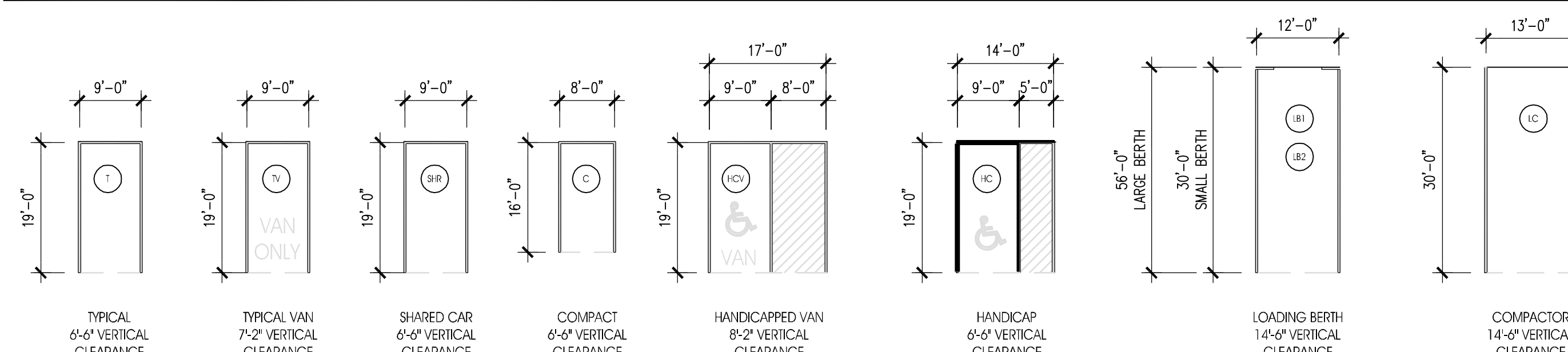
WASHINGTON CIRCLE



GENERAL NOTES

1. STRIPING DIMENSIONS ARE MEASURED FROM CENTER LINE TO CENTER LINE OF 4' STRIPING.
2. PARKING DIMENSIONS SHALL BE NO LESS THAN 7'-0" AND 14'-0" RECTANGULAR AREA, EXCLUSIVE OF COLUMN OBSTRUCTIONS.
3. ALL PARKING SPACES AND/OR GROUPS OF SPACES SHALL BE CENTERED IN BETWEEN COLUMNS AND/OR WALLS OR BETWEEN SHEER WALLS UNO.
4. SEE SHEET AG9.02 FOR ALL HANDICAP STRIPING AND HANDICAP VAN STRIPING.
5. SEE SHEET AG9.02 FOR TYPICAL DIRECTIONAL ARROW DIMENSIONS AND STOP BAR.
6. AISLE WIDTH SHALL BE 20'-0" MIN AND NOT LESS THAN 17'-0" FOR ANGLE PARKING THAT IS 60° OR LESS AS MEASURED FROM CENTERLINE OF THE AISLE.
7. ALIGN SYMBOL INDICATES ALIGNMENT OF PARKING SPACE AND COLUMN.
8. PEDESTRIAN WALKWAYS SHALL BE 5'-0" MIN FROM CENTERLINE TO CENTERLINE OF 4' STRIPING.

PARKING LEGEND (SPACE TYPES)



**PARKING 1 LEVEL
STRIPING PLAN**
SCALE: 1/16" = 1'-0"

A5